

รถแทรกเตอร์ XCMG รุ่น QY55KAY ขนาดยกสูงสุด 55 ตัน รุ่นใหม่ล่าสุด ตลาดเมืองไทย ปี2017

ลักษณะทั่วไป

- น้ำหนักยกสูงสุด 55 ตัน ที่รัศมี 3 เมตร
- บูมหลัก 5 ท่อน ความยาวบูม 11.4-43.5 เมตร พร้อมรอกใหญ่พิคักยกสูงสุด 55 ตัน และรอกเล็กพิคักยกสูงสุด 4.5 ตัน
- บูมหลักหน้าตัดแบบตัวยู(U) บูมท่อนที่ 2 ยึดอิสระ และบูมท่อนที่ 3,4 และ 5 ยึดออกพร้อมกัน ยึดสูงสุด 43.5 เพียง 90 วินาที
- จีบแบบเหล็กกล่อง แขนงยึดอยู่ข้างบูมหลัก 2 ท่อน ยาว 9.5 และ 16 เมตร สามารถประกอบท่ามุม 0, 15 และ 30 องศา กับบูมหลัก
- น้ำหนักรวมนทั้งหมด ขณะวิ่ง 42,200 กิโลกรัม ความเร็วสูงสุด 85 กิโลเมตร / ชั่วโมง
- หัวเก๋งล่าง, ป้อมขับเครื่อง ,ฝาครอบเครื่อง ,ชุดควบคุมขาเครื่อง , ก่องเก็บสัมภาระ รุ่นใหม่ล่าสุด

ตัวรถครนล่าง

- รถแบบ 12 ล้อ 4 เพลา 2เพลาหน้ายางเดี่ยว ขนาด 12.00-R24 2เพลาหลังยางคู่ ขนาด 12.00-R24 รวมจำนวนยางทั้งหมด 12 เส้น พร้อมยางอะไหล่ 1 เส้น ขนาด 12.00-R24
- ห้องขับเครื่องล่างแบบหัวเต็มรุ่นใหม่พวงมาลัยขวา ที่นั่งผู้ควบคุมรถแบบปรับระดับ และความนุ่มนวลตามน้ำหนักของผู้นั่ง พร้อมอุปกรณ์อำนวยความสะดวก เช่น เครื่องปรับอากาศ, พวงมาลัยปรับสูงต่ำ, ม่านบังแดดและมาตรวัดตาม มาตรฐานสากล ถึงดับเพลิง พร้อมจอแสดงภาพจากกล้อง ทำยรถเครนเพื่อความสะดวกเวลาอหยุด
- ไช้เรนที่หัวเก๋ง
- ขาเครื่องแบบไฮดรอลิก 4 ขา ระยะขาชิด ซ้ายถึงขวา 7.1 เมตร หน้าถึงหลัง 6.10 เมตร พร้อมขาที่ 5 ใต้ป้อมขับล่าง เพื่อยกทำงาน ได้รอบตัว 360 องศา
- เครื่องยนต์ SINO TRUCK จาก Hangzhou Engine CO.,Ltd. รุ่น WD 618.338 เทคโนโลยี Deutz จากประเทศเยอรมัน ขนาด 375 แรงม้า มาตรฐานยูโร3 ให้แรงบิดสูง อัตราการสิ้นเปลืองน้ำมัน ประมาณ 40 ลิตร/100 กิโลเมตร
- เกียร์ FAST 9 เกียร์เดินหน้า , 1 เกียร์ถอยหลัง ชุดเพลาของ Meritor เมนเป้ม ของKeyuan
- ความเร็วสูงสุด 85 กิโลเมตร/ชั่วโมง

ชุดเครนบน

- ห้องบังคับเครนรุ่นใหม่ทัศนวิสัยดีเยี่ยม, กระจกเซฟตี้ ปลอดภัยและสะดวกสบาย
- ประตูเปิดปิดแบบบานเลื่อน กว้างขวางขึ้นลงสะดวกสบาย
- ชุดควบคุมคอนโทรล แบบจอยสติ๊ก นุ่มนวล ปลอดภัย และทำงานยกควบคุมได้ละเอียดกว่าแบบก้านโยก พร้อมสวิทช์ระบบควบคุมความปลอดภัย ในกรณีพลังเหลือ ไปโดนจอยสติ๊ก จะไม่ทำงาน พร้อมสวิทช์ควบคุมต่างๆ ใช้งานง่าย เช่นปุ่มตัดระบบฉุกเฉิน ,ปุ่มสตาร์ททำงานที่ป้อมบน ,วิทยุ , มิเตอร์ชั่วโมงการทำงาน , ถึงดับเพลิง
- พร้อมเครื่องปรับอากาศ ,ไฟสามสี เพื่อบอกสถานะการทำงาน ,
- ระบบ SAFETY LMI ของ PAT Hirschmann จอแสดงผลการทำงานเป็นจอสี LCD ขนาดใหญ่ ใช้งานง่าย แสดงผลการทำงาน โดยแสดงผลการทำงานการยก เช่น เปอร์เซ็นต์โมเมนต์, น้ำหนักที่ยกจริง, น้ำหนักที่ให้ยกได้, รัศมีการทำงาน, ความยาวบูมที่ยืดออก, องศาบูม, ระยะยกสูงสุด, จำนวนทดสลิง และอื่น ๆ พร้อมรูปภาพฟิค สัญลักษณ์ และมีระบบเตือนและตัดการทำงานเมื่อยกน้ำหนักเกิน พร้อมจอแสดงภาพจากกล้องติดท้ายเครนเพื่อดูโลนสลิง ระบบป้องกันการปล่อยสลิงเกินจนหมดโลนสลิง และระบบป้องกันการยกสูงเกินจนตะขอชกชนจานรอกบน
- เกาเตอร์เวท 2 ชั้น แยกเป็น
 1. ขนาด 5.5 ตัน แบบยึดติดกับรถ
 2. ขนาด 1.0 ตัน แบบแยกถอดประกอบถ้าประกอบรวมทั้งหมด หนักรวม 6.5 ตัน
- บริการหลังการขายและอะไหล่โดย บมจ.ซูโก



Truck Crane

QY55KA_Y

Basic technical specification

Lifting capacity

Max. lifting load 55t

Dimension

Overall length 13930mm
Overall width 2780mm
Overall height 3660mm

In travel configuration

Total weight 42200Kg
Front axle 16200Kg
Rear axle 26000Kg

Performance

Max. travel speed 85Km/h
Max. grade ability 42%

Boom 5-section,
11.4m~43.5m
Boom + jib length 59.5m

Max. lifting height
of boom 44m

Max. lifting height
of boom + jib 58.1m

Xuzhou Heavy Machinery CO., LTD

Features and advantages of QY55KA_Y Truck Crane

QY55KA_Y Truck Crane is a competitive product that tailor-made for customers by XCMG Hoisting Crane Business Division, depending on technologies in K-series cranes in more than 10 years and integrating several latest achievements in scientific research.



The whole crane has leading lifting performance and traveling performance, and highest hoisting, elevating and telescoping efficiency in the industry. It is widely used in various working sites such as construction sites, urban renewal, transportation, port, bridge, oil field, mine field and other complex working environments.

(1) Leading lifting performance and traveling performance

With optimized structure design, boom length 11.4~43.5m, it has strong lifting performance that is 5%~10% higher than products of same tonnage in the industry. Large power engine contributes to excellent dynamic performance, strong grade ability and good pass ability. Max. grade ability is 42%, max. travel speed is 85km/h.

(2) Mature and reliable double pump confluence technology, highest hoisting, elevating and telescoping efficiency in the industry

The system achieves double pump confluence via telescoping, elevating and hoisting operation so as to improve working efficiency and satisfy the demands of market and customers;

Specially designed confluence multi-way valve, double pump confluence technology is adopted in winch raising and lowering, boom telescoping and elevating up operation, working efficiency in elevating and telescoping operation is leading in the industry.

(3) Improved reliability of radiation and electric systems, safer lifting and driving operation

Double fold line winch is used in winch system, which greatly improves reliability.

Waterproof plug-ins with rubber bush inside is adopted in electric system, the crane has good waterproofness and protection grade reaches IP65.

Air-conditioner condenser is arranged separately, system exhaust port is added to future

improve heat exchange rate of radiation system, permissible ambient temperature is above 45°C.

Fuel tank made of aluminium alloy is adopted, which has good appearance and quality, and strong corrosion resistance.

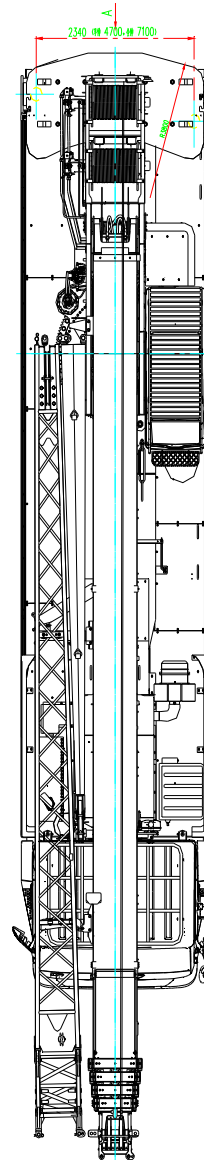
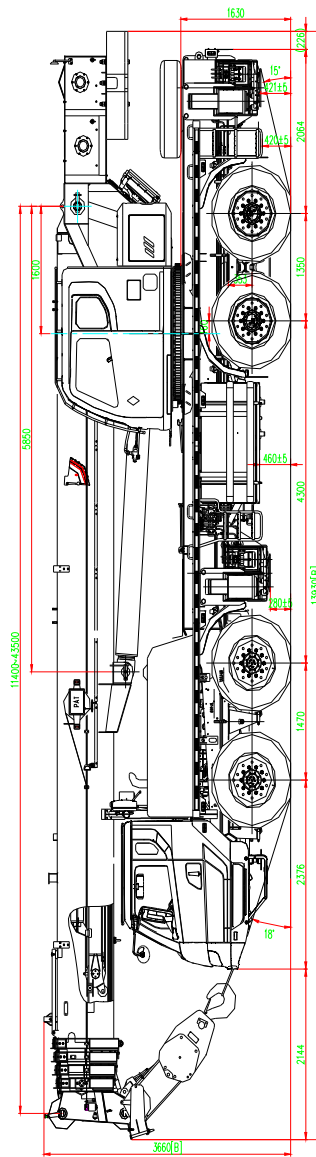
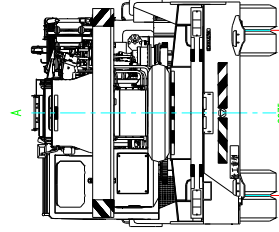
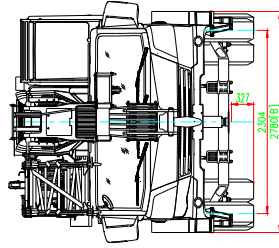
(4) New upgraded outline and humanized design, more comfortable driving operation

With brand new operator's cab, driver's cab, engine hook and cover, the crane has novel appearance, streamlined and elegant outline.

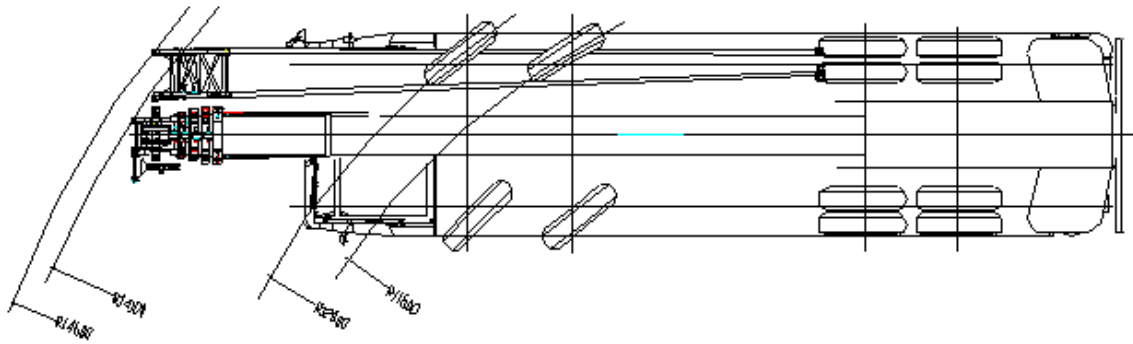
Rearview mirrors are equipped in operator's cab to observe working environment easily. Front pedal and sliding pedal at left side are available, which are convenient for entering and going out of operator's cab.

Ladders at both sides of chassis are convenient to climbing up and down the crane. Toolbox is located at right rear side of the frame, which is convenient for customers to store supplied tools.

Outline in travel configuration



Track in travel turning configuration



Technical specifications of superstructure

<u>Model</u>	QY55KA_Y
<u>Hydraulic system</u>	<p>Hydraulic pump..... quadruple pump is driven by chassis engine, variable-displacement pump used for hoisting, elevating and telescoping system.</p> <p>Control valve.....load sensitive proportional multi-way change valve controlled by pilot hydraulic oil, impact-resistant valve and anti-cavitation corrosion valve are equipped.</p> <p>Oil circuit.....air-cooled hydraulic oil cooler, which may effectively reduce the temperature of oil in the system</p> <p>Oil filters..... suction filter and return filter</p>
<u>Main boom</u>	<p>1-section base boom and 4-section telescopic boom, with anti-twist design and high-strength steel structure. Boom section is U-shaped cross-section, adopts plug-in boom head and slide structure, therefore boom has large contact area, small deformation, and smooth telescoping.</p> <p> Main boom length..... 11.4m~43.5m</p> <p> Main boom full extend speed..... fully extend to 43.5m in 90s</p>
<u>Jib</u>	<p>2-section, 1st section jib is lattice welding structure and length 9.5m, 2nd section jib is box welding structure. The max. length of jib is 16m, 0°, 15° and 30° offset angles are available.</p>
<u>Single top (standard) (boom auxiliary pulley)</u>	<p>Single top is installed on the top of main boom, for single wire rope hoist.</p> <p>Its lifting performance is the same as main boom, but its max. lifting load not exceeding 4500kg.</p>
<u>Elevating system</u>	<p>Single-supported double acting front-mounted hydraulic elevating cylinder, with balance valve equipped.</p> <p> Elevating speed.....-1°~+81°, <40s</p>

Main winch system Hydraulic controlled speed regulation, groove drum is equipped, driven by hydraulic motor through planetary gear reducer, and built-in normally closed brake and counterbalance valve are available.
 Hoisting system has features of high speed with light load and low speed with heavy load.
 Single line pull.....48KN
 Single line speed (no load)130m/min
 Dimension × length.....φ18mm×190m

Auxiliary winch system Hydraulic controlled speed regulation, groove drum is equipped, driven by hydraulic motor through planetary gear reducer, and built-in normally closed brake and counterbalance valve are available.
 Hoisting system has features of high speed with light load and low speed with heavy load.
 Main and auxiliary winch systems are operated separately.
 Single line pull.....48KN
 Single line speed (no load)130m/min
 Dimension × length.....φ18mm×125m

Hook block Equipped with six pulleys on boom head.

No.	Lifting capacity (t)	Pulley group	Parts of line	Weight (kg)	Qty.
1	50	6	12	515	1
2	35 (optional)	5	10	403	1
3	4.5	1	1	100	1

Slewing system Single-row 4-point contact ball external tooth slewing ring. Slewing system is driven by hydraulic motor, with planetary gear reducer, for 360° continuous rotation, stepless slewing speed regulation is available.
 Functions such as power control or free sliding are equipped, and foot pedal is fitted to control slewing brake.

Horn button is equipped on the control lever.

Slewing speed.....0~2.0r/min

Operating mode

Stepless speed regulation is available.

All the movements of the crane is controlled by hydraulic pump, proportional valve and pilot hydraulic-proportional control system, controlled by two control levers at left and right.

Operator's cab

The new steel cab is located at the left side of turntable, equipped with no dead vision front glass, safe glass, sun visor, sliding door, adjustable seat, two operating levers beside the seat, indicators, electric window wiper, pull-push pedal facilitate personnel access.

Heater and air conditioner are available.

Safety devices

Hydraulic balance valve;

Hydraulic over-flow valve;

Hydraulic double-way valve;

Load Moment Indicator (LMI);

Lever spring-back middle position system;

Lowering limiter avoids wire rope over-releasing;

Anti-two block at boom head avoids wire rope over-winding;

LMI

The safety protection device is installed in operator's cab.

When actual moment approaches overload value, it may send out visual alarm, and automatically stop dangerous movements before overloading.

Overload memory function (black box) and fault self-diagnosis function are available.

The following items can be shown:

Moment percentage

Actual lifting load

Rated lifting load

Radius

Boom length

Angle

Max. lifting height
Working condition code
Parts of line
Limit angle
Information code

Outrigger

Four outriggers are arranged in H shape longitudinally, with outrigger beams and jacks hydraulically controlled by control levers. Control levers are located on both sides of the chassis, with a luminous level gauge equipped.

Check valve is fitted in each outrigger cylinder, and double-way valve is fitted in jack cylinder.

Outrigger span:

- Longitudinal × lateral (half-extended).....6.1m×4.7m
- Longitudinal × lateral (fully-extended).....6.1m×7.1m
- Outrigger float dimension.....φ450mm
- Max. outrigger reaction force.....490KN

Fifth jack

It is located in front of chassis frame, enables the crane have the same lifting performance in 360° operation; hydraulic controlled check valve is equipped in hydraulic cylinder.

Outrigger float dimensionφ260mm

Counterweight

Counterweights are installed at the turntable tail, fixed counterweights weight is 5500kg, movable counterweights weight is 1000kg.

Color

Chassis: black
wheel rim: deep gray;
Driver's cab: engineering yellow;
Crane superstructure: basic boom, turntable and jib are engineering yellow, main boom are black except basic boom.

Technical specification of chassis

Type Right-hand drive steering wheel, drive/steering type is 8×4.

Frame Designed and manufactured by XCMG, optimal load-bearing structure and anti-torsion box structure design, made of imported high strength steel. Special boxes for stowing outriggers are located between 2nd axle and 3rd axle, or at the tail of frame, equipped with front and rear towing hooks.

Engine

Model	WD615.338
Type	In-line, six-cylinder, water cooled, supercharging, intercooler, electric control
Manufacture	Hangzhou Engine Co., Ltd, China National Heavy-Duty Truck Group
Power/kw/rpm	276
Torque/N.m/rpm	1500/1100-1600
Displacement/ml	9726
Fuel consumed ratio /g/kw.h	194
Fuel tank capacity/L	About 320L
Emission standard	China National III
Remarks	Standard

Hydraulic system Fixed-displacement pump open type system, fixed-displacement gear pump is connected to transmission via PTO, and controls the movements of outriggers and turning.

Transmission 9-speed transmission, manually mechanical control by long distance soft axle, synchronizer is equipped.

Clutch Dry and pull type clutch, with φ430 diaphragm spring, without hydraulic torque converter.

Axle High strength axle with reliable performance, adopted oversea advanced technology and produced by famous company.

1st axle: single tire, for steering and nor driving.

2nd axle: single tire, for steering and nor driving.
3rd axle: double tire, for driving and nor steering, first-stage main reduction plus second-stage wheel reduction.
4th axle: double tire, for driving and nor steering, first-stage main reduction plus second- stage wheel reduction.

Steering

Mechanical steering system with hydraulic boosting device.

Suspension

Rear suspension, V-type thrust rod structure, and rubber spring suspension, to increase chassis driving stability and reduce tire wear.

Brake

Service brake.....foot pedal control, double-circuit air brake. The 1st circuit acts on the wheels of 1st axle, the 2nd circuit acts on the wheels of 3rd and 4th axles.
Parking brake.....air-releasing brake, which acts on 3rd and 4th axles.
Auxiliary brake.....engine cylinder inner-brake and engine exhaust brake, safety and reliability and extend the service life of brake friction disc.

Electric power system

DC 24 V, two 12 V battery group in series.
28V, 70 ampere generator.

Driver's cab

Full-dimension luxurious driver's cab. Radio, adjustable seat, steering wheel, large-view rear mirrors and manually operated lifters for door windows are equipped.
Heater, air-conditioner are standard.

Tires

12.00R24, ×12
Reserve: 12.00R24, ×1
Rim: 8.5-24

Tools

A set of service tool is supplied.

Main parts list

(Take real parts as standard)

No.	Name	Manufacture
1	Engine	Hangzhou Engine Co., Ltd, China National Heavy-Duty Truck Group
2	Transmission	Shanxi Fast Gear Co., Ltd. (9-speed)
3	Steering gear	Jiangmen Xingjiang Steering Gear Co., Ltd. Nantong Huanqiu Steering Gear Co., Ltd.
4	Axle	Xuzhou Meritor Axle Co., Ltd
5	Tire	Double Coin Load Tire Co., Ltd. Guizhou Tire Co., Ltd.
6	Chassis hydraulic pump	Xuzhou Keyuan Hydraulic Co., Ltd.
7	Chassis multi-way valve	Zhejiang Sunbun Technology Co., Ltd.
8	Superstructure multi-way valve	Ningbo Yuzhou hydraulic equipment factory
9	Slewing bearing	Xuzhou Rothe Erde Slewing Bearing Co., Ltd
10	Main winch motor	Zhonghang Liyuan Hydraulic Limited by Share Ltd. Beijing Huade Hydraulic Industry Group Co., Ltd. Huade Hydraulic Pump Branch Company
11	Main winch reducer	Xuzhou Sunbun Mechanic Co., Ltd. Xuzhou Keyuan Hydraulic Co., Ltd.
12	Main winch rope	Jiangsu Fasten Co., Ltd. Jiangsu Langshan wire Rope Co., Ltd. Juli Sling Co., Ltd.
13	Auxiliary winch motor	Zhonghang Liyuan Hydraulic Limited by Share Ltd. Beijing Huade Hydraulic Industry Group Co., Ltd. Huade Hydraulic Pump Branch Company
14	Auxiliary winch reducer	Xuzhou Sunbun Mechanic Co., Ltd. Xuzhou Keyuan Hydraulic Co., Ltd.
15	Auxiliary winch rope	Jiangsu Fasten Co., Ltd. Jiangsu Langshan wire Rope Co., Ltd. Juli Sling Co., Ltd.
16	Slewing motor	Zhonghang Liyuan Hydraulic Limited by Share Ltd. Beijing Huade Hydraulic Industry Group Co., Ltd. Huade Hydraulic Pump Branch Company
17	Slewing reducer	Bosch Rexroth (Beijing) Xuzhou Keyuan Hydraulic Co., Ltd. Xuzhou Sunbun Mechanic Co., Ltd.
18	Elevating cylinder	Chengdu Hydraulic Cylinder Co., Ltd. Xuzhou Hydraulic Parts Co., Ltd. XCMG
19	Telescoping cylinder	Chengdu Hydraulic Cylinder Co., Ltd. Xuzhou Hydraulic Parts Co., Ltd. XCMG
20	Horizontal	Xuzhou Hydraulic Parts Co., Ltd. XCMG

We reserve the right to modify the design without notice for improvement.

	cylinder	Zhangjiakou Changyu Construction Co., Ltd.
21	Vertical cylinder	Xuzhou Hydraulic Parts Co., Ltd. XCMG Zhangjiakou Changyu Construction Co., Ltd.
22	Elevating balance valve	Suzhou Bucher Hydraulic Equipment Co., Ltd.
23	Telescoping balance valve	Zhejiang Sunbun Technology Co., Ltd.
24	Hoisting balance valve	Bosch Rexroth China Co., Ltd.
25	LMI	Xuzhou Hirschmann Electronics Co., Ltd.
26	Operator cab	Hubei Qixing Auto Body Co., Ltd

Technical Specifications

Main Technical Data Table in Travel Configuration

(Subject to technical improvement)

Category	Item		Unit	Parameter	
Outline Dimensions	Overall length		mm	13930	
	Overall width		mm	2780	
	Overall height		mm	3660	
	Axle base	1st , 2nd axle		mm	1470
		2nd , 3rd axle		mm	4300
		3rd , 4th axle		mm	1350
	Wheel base	Front wheel		mm	2304
Rear wheel		mm	2075		
Weight	Total vehicle mass in travel configuration		kg	42200	
	Axle load	Front axle		kg	16200
		Rear axle		kg	26000
Power	Chassis engine	Model		WD615.338	
		Max. net power		kw/(r/min)	276/2200
		Max. net torque		N.m/(r/min)	1500/1300-1600
		Rate speed		r/min	2200
Travel Performance	Travel speed	Max. travel speed		km/h	85
		Min. steady travel speed		km/h	2~3
	Min. turning diameter		m	24	
	Min. ground clearance		mm	327	
	Braking distance (at 30 km/h)		m	≤10	
	Max. grade ability		%	42	
	Oil consumption per 100km		l	40	
Noise	Exterior noise level in accelerating		dB (A)	≤88	
	Noise level at seated position		dB (A)	≤90	

We reserve the right to modify the design without notice for improvement.

Main Technical Data Table for Lifting Operation

(Subject to technical improvement)

Category	Item		Unit	Parameter		
Main Lifting Performance	Max. total rated lifting capacity		t	55		
	Min. rated working radius		m	3		
	Turning radius at turntable tail		mm	3800		
	Max. load moment	Base boom		kN.m	2009	
		Fully-extended boom		kN.m	1129	
	Outrigger span	Longitudinal		m	6.1	
		Transverse		m	7.1	
	Lifting height	Base boom		m	11.9	
		Fully-extended boom		m	44	
		Fully-extended boom + jib		m	58.1	
	Boom length	Base boom		m	11.4	
Fully-extended boom		m	43.5			
Fully-extended jib		m	59.5			
Jib offset angle				0, 15, 30		
Working Speed	Boom elevating time	Boom raising		s	40	
		Boom lowering		s	180	
	Boom telescoping time	Fully extended		s	90	
		Fully retracted		s	180	
	Max. slewing speed			r/min	2.0	
	Outrigger extending and retracting time	Outrigger beam	Extending simultaneously		s	35
			Retracting simultaneously		s	30
		Outrigger jack	Extending simultaneously		s	40
			Retracting simultaneously		s	35
	Main winch		Rated load		m/min	85
			No load		m/min	130
	Auxiliary winch		Rated load		m/min	85
			No load		m/min	130
Noise	Exterior noise level		dB (A)	≤122		
	Noise level at seated position		dB (A)	≤90		

We reserve the right to modify the design without notice for improvement.

Rated lifting load tables

Table 3-1 QY50KA_Y boom rated lifting load tables (Outrigger fully-extended, 6.5t counterweight)

Working radius (m)	Fully-extended outriggers, over side and rear area operation; fully-extended outriggers, with 5 jack, 360° operation																				
	Base boom 11.40 m			Medium length boom 15.41 m			Medium length boom 19.42 m			Medium length boom 25.44 m			Medium length boom 31.46m			Medium length boom 37.48m			Fully-extended boom 43.5 m		
	Lifting load (kg)	Boom angle (°)	Lifting height (m)	Lifting load (kg)	Boom angle (°)	Lifting height (m)	Lifting load (kg)	Boom angle (°)	Lifting height (m)	Lifting load (kg)	Boom angle (°)	Lifting height (m)	Lifting load (kg)	Boom angle (°)	Lifting height (m)	Lifting load (kg)	Boom angle (°)	Lifting height (m)	Lifting load (kg)	Boom angle (°)	Lifting height (m)
3	55000	70	11.8	45000	76	16.1															
3.5	51000	67	11.6	45000	74	15.9															
4	48000	64	11.3	45000	72	15.7	35000	76	20	25000	80	26.2									
4.5	45000	61	11	43000	70	15.5	33000	74	19.8	25000	79	26									
5	41000	58	10.7	40000	68	15.3	32000	73	19.6	25000	77	25.9	18500	80	32.2						
5.5	36500	55	10.3	36000	66	15	29000	71	19.4	25000	76	25.8	18500	80	32.1						
6	33000	52	9.9	32500	63	14.8	27000	70	19.2	23300	75	25.6	18500	79	32						
7	27000	45	8.9	26600	59	14.2	24500	66	18.8	21000	73	25.3	18500	77	31.7	14000	79	37.9			
8	22200	36	7.5	22600	54	13.4	22500	63	18.2	19000	70	24.9	17700	75	31.4	13200	78	37.7	9500	80	44
9	17500	26	5.6	17600	50	12.6	17600	60	17.6	17000	68	24.5	16300	73	31.1	12500	76	37.4	9500	79	43.6
10				14600	44	11.5	14200	56	16.9	15400	65	24	15000	71	30.7	11800	75	37.1	9300	77	43.3
12				10100	31	8.6	10000	48	15.2	10700	60	22.8	11300	67	29.8	10300	71	36.4	8600	75	42.7
14							7200	39	12.9	7900	55	21.4	8400	63	28.8	8800	68	35.5	7900	72	42
16							5300	28	9.5	6000	49	19.7	6500	59	27.5	6800	65	34.5	7100	69	41.2
18										4600	42	17.5	5100	54	26	5400	61	33.4	5600	66	40.3
20										3500	34	14.7	4000	49	24.3	4300	58	32.1	4500	63	39.2
22										2700	24	10.8	3100	44	22.3	3600	54	30.5	3700	60	38
24													2500	38	19.7	2800	50	28.8	3000	57	36.6
26													1800	31	16.6	2200	45	26.8	2400	54	35
28																1700	41	24.4	1950	50	33.3
30																1300	35	21.6	1500	46	31.3
32																			1200	42	29
Telescoping rate of each boom	II	0		50%			100%			100%			100%			100%			100%		
	III	0		0			0			25%			50%			75%			100%		
	IV	0		0			0			25%			50%			75%			100%		

We reserve the right to modify the design without notice for improvement.

April 2016

section %	V	0	0	0	25%	50%	75%	100%						
Parts of line	12		10		8		6		4		3		3	
Boom angle	26° ~ 70°		31° ~ 76°		28° ~ 76°		24° ~ 80°		31° ~ 80°		35° ~ 80°		42° ~ 80°	
Hook block	515kg													

Table 3-2 QY50KA_Y boom rated lifting load tables (Outrigger half-extended, 6.5t counterweight)

Working radius (m)	Fully-extended outriggers, over side and rear area operation; fully-extended outriggers, with 5 jack, 360° operation																				
	Base boom 11.40 m			Medium length boom 15.41 m			Medium length boom 19.42 m			Medium length boom 25.44 m			Medium length boom 31.46m			Medium length boom 37.48m			Fully-extended boom 43.5 m		
	Lifting load (kg)	Boom angle (°)	Lifting height (m)	Lifting load (kg)	Boom angle (°)	Lifting height (m)	Lifting load (kg)	Boom angle (°)	Lifting height (m)	Lifting load (kg)	Boom angle (°)	Lifting height (m)	Lifting load (kg)	Boom angle (°)	Lifting height (m)	Lifting load (kg)	Boom angle (°)	Lifting height (m)	Lifting load (kg)	Boom angle (°)	Lifting height (m)
3	50000	70	11.8	45000	76	16.1															
3.5	50000	67	11.6	45000	74	15.9															
4	48000	64	11.3	45000	72	15.7	35000	76	20	25000	80	26.2									
4.5	36400	61	11	36400	70	15.5	33000	74	19.8	25000	79	26									
5	28600	58	10.7	28600	68	15.3	28700	73	19.6	25000	77	25.9	18500	80	32.2						
5.5	23300	55	10.3	23300	66	15	23300	71	19.4	24800	76	25.8	18500	80	32.1						
6	19500	52	9.9	19500	63	14.8	19500	70	19.2	20800	75	25.6	18500	79	32						
7	14300	45	8.9	14200	59	14.2	14200	66	18.8	15400	73	25.3	16200	77	31.7	14000	79	37.9			
8	10900	36	7.5	10900	54	13.4	10900	63	18.2	12000	70	24.9	12700	75	31.4	13200	78	37.7	9500	80	44
9	8500	26	5.6	8500	50	12.6	8500	60	17.6	9500	68	24.5	10200	73	31.1	10700	76	37.4	9500	79	43.6
10				6800	44	11.5	6700	56	16.9	7800	65	24	8400	71	30.7	8800	75	37.1	9200	77	43.3
12				4300	31	8.6	4300	48	15.2	5300	60	22.8	5900	67	29.8	6300	71	36.4	6600	75	42.7
14							2700	39	12.9	3700	55	21.4	4200	63	28.8	4600	68	35.5	4900	72	42
16							1600	28	9.5	2500	49	19.7	3100	59	27.5	3400	65	34.5	3700	69	41.2
18										1600	42	17.5	2200	54	26	2600	61	33.4	2800	66	40.3
20										1000	34	14.7	1500	49	24.3	1900	58	32.1	2100	63	39.2
22													1000	44	22.3	1300	54	30.5	1600	60	38
24													500	38	19.7	900	50	28.8	1100	57	36.6
26																500	45	26.8	800	54	35
28																			500	50	33.3
Telescoping rate of each boom section %	II	0	50%			100%			100%			100%			100%			100%			
	III	0	0			0			25%			50%			75%			100%			
	IV	0	0			0			25%			50%			75%			100%			
	V	0	0			0			25%			50%			75%			100%			
Parts of line	12		10		8		6		4		3		3								

We reserve the right to modify the design without notice for improvement.

April 2016

Boom angle	26° ~ 70°	31° ~ 76°	28° ~ 76°	24° ~ 80°	31° ~ 80°	35° ~ 80°	42° ~ 80°
Hook block	515kg						

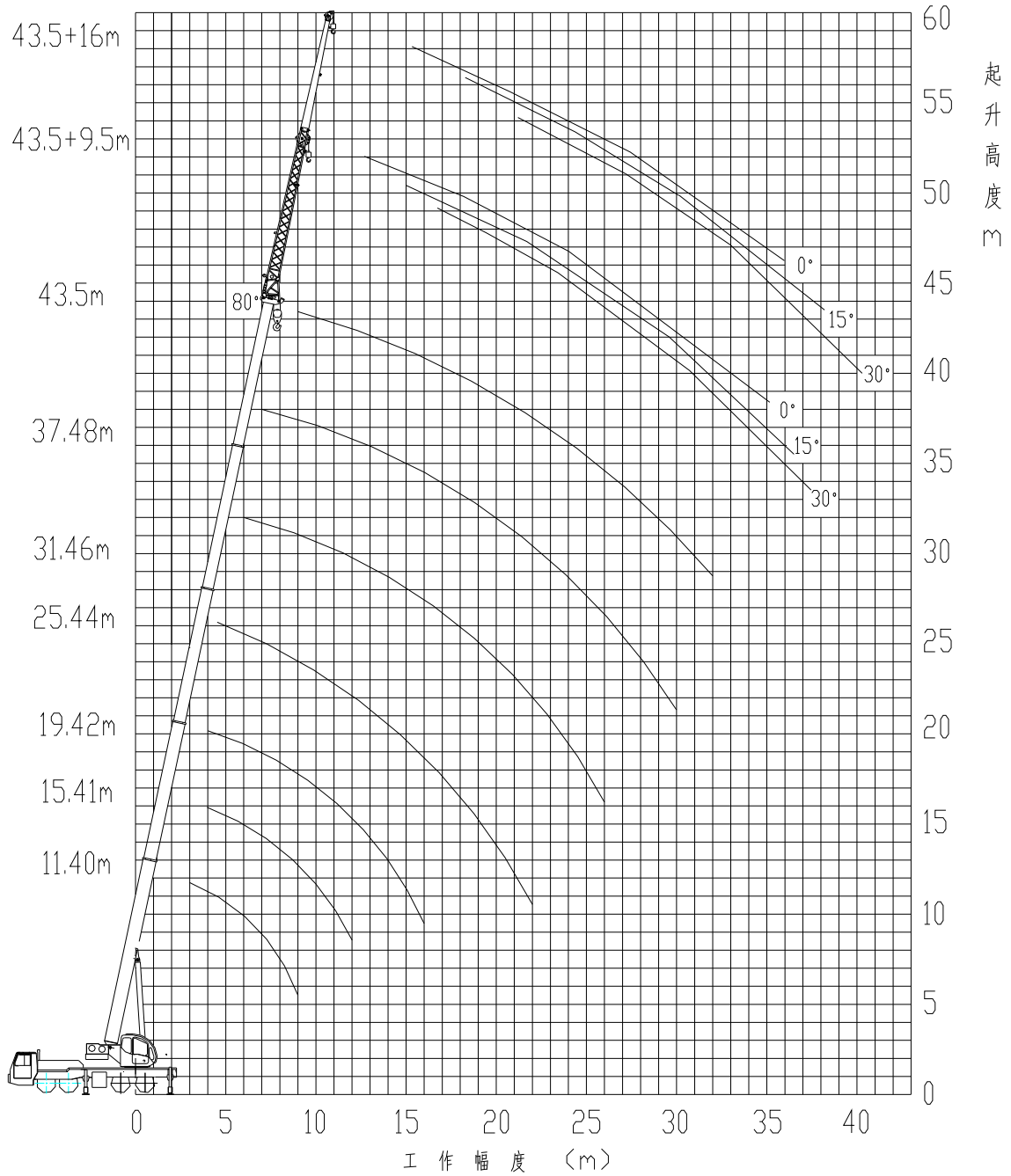
Table3-3 QY50KA_Y jib rated lifting load tables (boom fully-extended 43.5m)

With 7.1m fully-extended outrigger, without 5th jack supported, side and rear area operation; with 5th jack supported, 360° operation																		
1st jib section mode										2nd jib section mode								
9.5m										16m								
0°			15°			30°			0°			15°			30°			
Boom angle	Lifting load	Radius	Lifting height	Lifting load	Radius	Lifting height	Lifting load	Radius	Lifting height	Lifting load	Radius	Lifting height	Lifting load	Radius	Lifting height	Lifting load	Radius	Lifting height
78	4500	12.8	52	3000	14.9	51.2	2500	16.6	49.8	2800	15	58.1	1500	18.6	56.6	1200	21.6	54.2
75	4000	15.5	51	2700	17.5	50.1	2400	19.2	48.7	2200	18	57	1300	21.5	55.3	1100	24.4	52.8
72	3500	18.1	49.9	2500	20	48.9	2300	21.6	47.4	1900	20.9	55.8	1200	24.3	53.9	1000	27.1	51.2
70	3200	19.8	49.1	2300	21.7	48	2200	23.2	46.5	1800	22.8	54.9	1200	26.1	52.9	950	28.8	50.1
65	2550	23.9	46.9	2100	25.7	45.6	1900	27.2	44	1600	27.4	52.4	1000	30.6	50.1	850	33	47.1
60	2000	27.9	44.3	1700	29.6	42.9	1600	30.8	41.1	1200	31.8	49.5	900	34.8	46.9	750	37	43.7
55	1200	31.6	41.4	1000	33.2	39.8	900	34.3	37.9	850	36	46.2	700	38.7	43.4	650	40.6	40
50	600	35.1	38.2	500	36.5	36.5	500	37.4	34.5	450	39.9	42.6	400	42.3	39.5	350	43.9	36
With 4.7m half-extended outrigger, without 5th jack supported, side and rear area operation; with 5th jack supported, 360° operation																		
78	4500	12.3	51.3	3000	14.1	50.6	2500	15.7	49.5	2800	14	57.6	1500	17.3	56.3	1200	20.3	54.1
75	3800	14.9	50.5	2700	16.6	49.8	2400	18.2	48.6	2200	16.9	56.7	1300	20.2	55.2	1100	23	53
72	2700	17.4	49.6	2400	19.1	48.8	2200	20.6	47.5	1800	19.7	55.7	1200	22.9	54	950	25.6	51.6
70	2100	19	48.9	1900	20.7	48	1700	22.2	46.7	1600	21.6	54.9	1100	24.7	53.2	900	27.3	50.6
65	1150	23	47	1000	24.7	45.9	1000	26	44.5	800	26.1	52.8	600	29.1	50.7	600	31.5	48
60	500	26.9	44.7	500	28.4	43.5	400	29.6	42									

We reserve the right to modify the design without notice for improvement.

Lifting height curves

Crane working range (with outrigger fully-extended)



Working range

Working areas with outrigger fully-extended

