

XR360 旋挖钻机 XR360 Rotary Drilling Rig

XR系列
旋挖钻机
XR Series Rotary Drilling Rig

性能特点

采用旋挖钻机专用液压伸缩式履带底盘,满足超强的稳定性和运输的便捷性。采用进口康明斯涡轮增压发动机（欧Ⅲ排放阶段），动力强劲,足够的动力储备满足高原施工,噪音、排放达到国家标准。恒功率最佳动力输出，使整机处于最佳工作状态。

主副液压系统均采用负荷传感技术，使液压系统效率更高，更节能；采用重载液压元件，满足旋挖钻机各种工况。

拥有专利的平行四边形铰接机构实现了较大范围的工作区域，钻桅设计为高强度材质的箱形结构，较高的刚性与抗扭曲性，有效地保证了钻孔精度，各铰接均采用免润滑轴承，转动灵活自如。360° 上车回转任意角度排渣。

具有自主知识产权的智能控制系统, CAN总线和PLC控制系统的应用，包括钻桅垂直度自动/手动调整、深度自动检测显示、回转角度自动显示、智能故障诊断控制等。

动力头采用三个减速机驱动，满足大扭转输出。

标配集中润滑系统，维护保养更便捷。

Performance Characteristics

The special hydraulic chassis for the rotating drill with extensible crawler is provided with the excellent stability and is convenient to transport. The imported Cummins turbo-supercharged engine (meeting EU-III standard) is powerful, and has sufficient power reserve, which can be operated in plateau. Its noise and emission meet the national standards. The constant power and the best output enable the complete machine to function at its best.

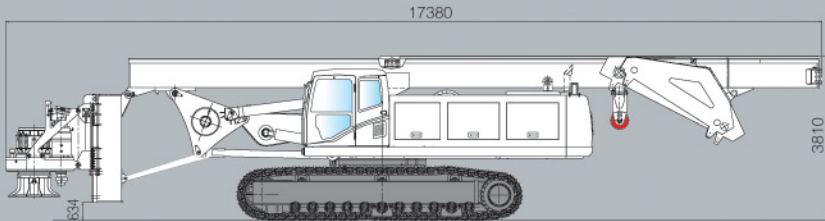
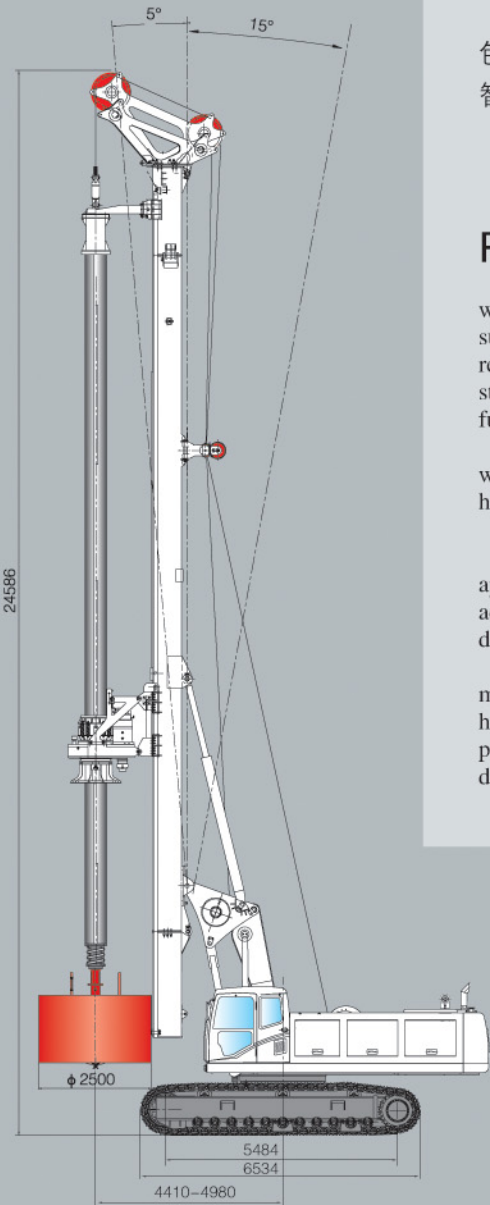
The main and auxiliary hydraulic systems are all adopt the technique of load sensor, which can increase the efficiency of hydraulic system and save energy. It uses heavy load hydraulic units to satisfy the all kinds operating status of drill.

The patented parallelogram hinge mechanism enlarges the work area.

Independent intellectual property rights of the intelligent control system, the application of CAN bus and the PLC control system, including the automatic and manual adjustment of the perpendicularity of the drill mast, the automatic display of the drilling depth, rotary automatic positioning control and the intellectual fault diagnosis control.

Three speed reducers are used in the power head. It can output high torque. The drill mast, which is made of the materials with high strength, is designed to box structure. The higher rigidity and anti-distortion can ensure the drilling accuracy effectively. The hinge provided with the bearing exempt from lubrication can turn neatly. The slag can be discharged at any point of 360° rotation.

Standard centralized lubricating system, allowing easier maintenance.



XR360 旋挖钻机主要技术参数

Main Technical Data of XR Series Multi-functional Combined Rotary Drilling Rig

主要技术参数 Main Technical Specification			
发动机 Engine	型号 Model		CUMMINS QSM11-C400
	额定功率 Rated Power	kW	298
动力头 Rotary Drive	最大输出扭矩 Max. output torque	kN · m	360
	转速 Rotary speed	r/min	7 ~ 20
最大钻孔直径 Max. Drilling Diameter		mm	φ 2500
最大钻孔深度 Max. Drilling Depth		m	92, 特配102
加压油缸 Pull-Down Cylinder	最大压力 Max. pull-down piston push	kN	240
	最大提升力 Max. pull-down piston pull	kN	220
	最大行程 Max. pull-down piston stroke	m	6.0
主卷扬 Main Winch	最大提升力 Max. Pulling force	kN	320
	最大卷扬速度 Max. line speed	m/min	72
副卷扬 Auxiliary Winch	最大提升力 Max. Pulling force	kN	100
	最大卷扬速度 Max. line speed	m/min	65
钻桅倾度 侧向 / 前倾 / 后倾 Side/forwards/backwards Mast Rake			± 4° / 5° / 15°
底 盘 Undercarriage	最大行走速度 Max. traveling speed	km/h	1.5
	最大爬坡度 Max. grade ability	%	35
	最小离地点间隙 Min. Clearance	mm	445
	履带板宽度 Track shoe width	mm	800
	履带最大总宽 Distance between tracks	mm	3500 ~ 4800
液压系统 Hydraulic System		工作压力 Working pressure	Mpa
整机工作质量 Overall Drilling Weight		t	92
外形尺寸 Dimension	工作状态 Working condition	mm	11000 × 4800 × 24586
	运输状态 Transportation condition	mm	17380 × 3500 × 3810



XR360