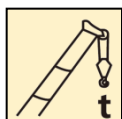


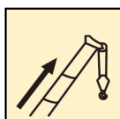
QY55KA_Y 汽车起重机 / Truck Crane

技术规格书

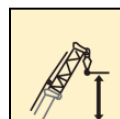
Basic technical specification



55t



43.5m

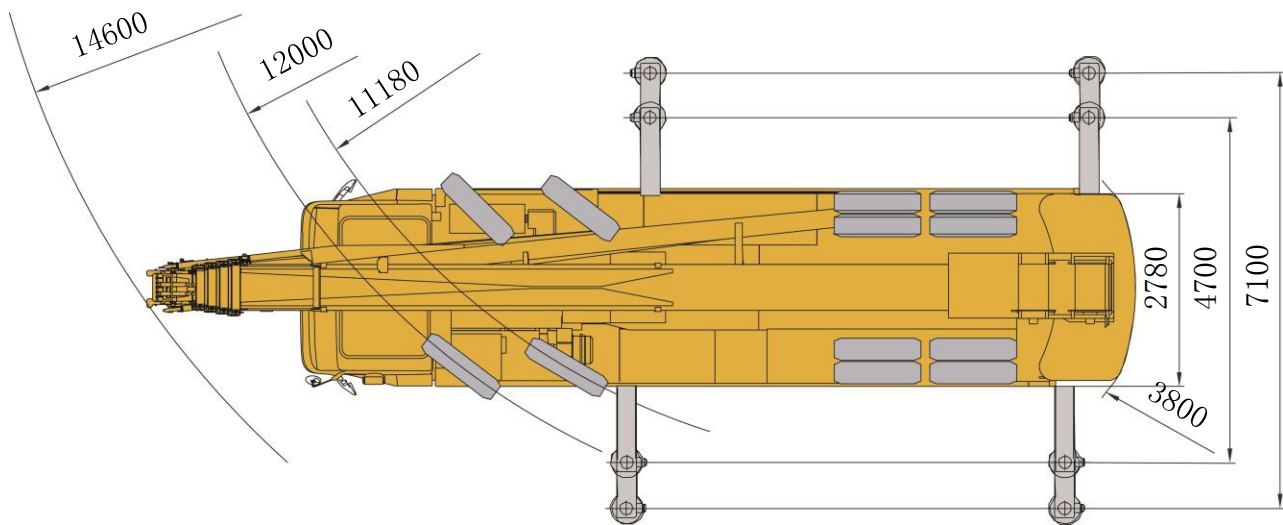
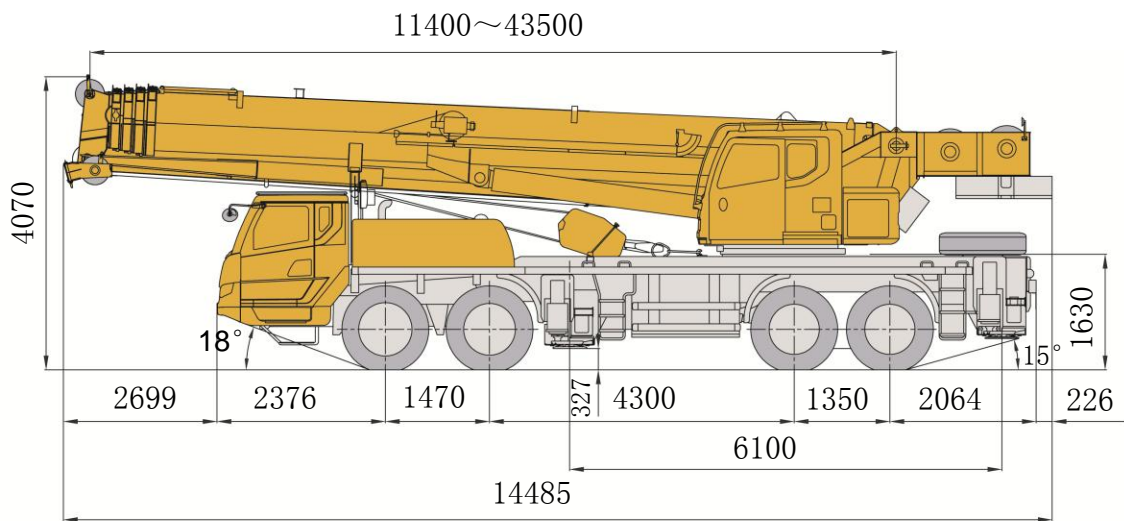


58.1m




目录 Content	
尺寸参数 Dimensions	3
技术规格 Product Specifications	4-7
重量/作业速度 Weight / Working speeds	8
臂架组合方案 Boom / Jib combinations	9
主臂 Boom	10-11
副臂 Jib	12-13
符号标识 Description of symbols	14
主要技术参数表 Transportation plan	15-16
注意事项 Notes	17


尺寸参数 Dimensions



技术规格

Technical specifications

	底盘
车架	徐工设计、制造，全覆盖式走台板，受力结构优化设计，防扭转箱型结构，高强度钢材制造
支腿	4支腿。纵向H形布置，操作杆控制液压动作；可由底盘任一侧同时或单独控制各支腿的动作，设有水平仪；附带第五支腿，且垂直支腿带有液压双向锁
发动机	六缸、柴油、中国重汽 WD615.338 额定功率/转速：276kw/2200rpm 最大输出扭矩/转速：1500N.m/1100-1600rpm 排放标准：国III 油箱容积：320L
变速箱	9档变速箱，远距离软轴机械操纵，带同步器
车桥	高强度桥，两桥驱动：8×4×4
悬挂	前悬架：板簧悬架，筒式减震器； 后悬架：橡胶悬架，V型推力杆
轮胎	12.00R24
制动	双回路，气制动，鼓式制动器 行车制动：脚踏板操纵的双回路气压制动；第一回路作用于一、二轴车轮上，第二回路作用于三、四轴车轮上； 驻车制动：放气制动，作用于二、三、四轴上，通过各轴上的弹簧储能气室起作用 辅助制动：发动机排气制动+缸内缓速制动
转向	机械式转向机构，带有液压助力。
驾驶室	右驾，钢结构全宽豪华驾驶室，全封闭，密封性好，防腐蚀、软化内饰，装备豪华舒适；配置收音机、可调式座椅、简易卧铺、方向盘、安全玻璃、3只雨刷器、电动后视镜、电动门窗升降器、杂物箱、空调；
电气系统	直流24伏特，电池组2个 发电机：28±0.3伏特-70安培

	上车
结构	徐工设计、制造，高强度钢材制造。
液压系统	液压泵：底盘发动机驱动四联泵，变量泵用于起升、变幅、伸缩。 控制阀：先导液压油控制的负荷敏感式比例多路换向阀，带有抗冲击阀、防气蚀阀。 油路：风冷式液压油冷却器，有效降低系统油温 滤油器：进、回油滤油器
操纵方式	无级调速。先导液比例操纵，由左右2个操纵手柄控制 由液压泵和比例阀进行液压先导式控制起重机的全部动作。
主、副起升机构	液压控制调速，装有双折线绳槽卷筒，由液压马达通过行星齿轮减速器驱动，内置常闭式制动器并带有平衡阀。具有轻载高速、重载低速的特点。主、副卷扬减速机分别独立操作。
回转机构	四点接触球式回转支承，由液压马达驱动行星齿轮回转机构减速器驱动，可连续回转360°。具有动力控制或自由回转的功能，可无级调速。回转杆设有鸣响开关。 回转速度.....0～2r/min
变幅机构	单支双作用前置液压变幅油缸，带有平衡阀
操纵室	安置在转台左侧，新型钢制操纵室，装有无视野死角的前景窗，安全玻璃，车窗装有遮阳板，外开式车门，座椅靠背可倾斜定位。前窗顶窗装有雨刮器，标准的操纵控制件和指示器。 配备单冷空调。
安全装置	液压平衡阀、液压溢流阀、液压双向锁、力矩限制器、操纵杆弹簧式回中系统、三圈保护器、防止钢丝绳过放、臂头设置高度限位、防止钢丝绳过卷；
组合配重	平衡重固定在起重机转台尾部，固定配重量：5500kg。1000kg活动平衡重。

技术规格

Technical specifications



臂架系统

主 臂	由1节基本臂和4节伸缩臂组成，采用抗扭曲设计，高强度结构钢制造。起重臂截面为U型截面，插入式臂头及滑块结构，接触面积大，吊重变形小，伸缩平稳。 主臂长度.....11.4m～43.5m 全伸速度.....全伸43.5m小于90s
副 臂	采用两节箱型腹置副臂，一节臂工作长度9.8m，两节臂全伸工作长度16m，安装角度5°、15°、30°。
臂端单滑轮	单滑轮, 安装在主臂顶端用于单股钢丝绳起重作业。 臂端单滑轮的起重性与主臂相同，但最大起重量不超过4500kg。

选装配置

驾驶室	驾驶室报警灯、倒车影像
安全装置	ABS、卷扬监视装置、三色报警灯、吸盘式弹头警示灯、角度指示器

产品各部件明细如上所述，具体部件明细请参照产品报价单

技术规格

Technical specifications



Chassis

Frame	Designed and manufactured by XCMG, it is made of high strength steel with fully covered walking surface, optimized load-bearing structure design and anti-torsion box-typed structure.
Outrigger	Four outriggers are arranged in H shape longitudinally, with outrigger beams and jacks hydraulically controlled by control levers. Control levers are located on both sides of the chassis, with a luminous level gauge equipped, with the fifth jack, and double-way valve is fitted in jack cylinder.
Engine	SINOTRUCK WD615.338, diesel, 6 cylinders. Rated power/rpm: 276kw/2200rpm Max. torque/rpm: 1500N.m/1100-1600rpm Engine emission: China national III Fuel tank capacity: 320L
Gearbox	9-speed transmission, manually mechanical control by long distance soft axle, synchronizer is equipped.
Alxes	High-strength axles, two axles for driving: 8×4×4
Suspension	Front suspension: leaf spring suspension with tube shock absorber Rear suspension: rubber suspension with V-type push rod
Tires	12.00R24
Brakes	Double-circuit air pressure brake, disk brake Service brake: The service brake is controlled by foot pedal, and it is double-circuit air pressure brake. The 1st circuit acts on the wheels of the 1st and 2nd axle, and the 2nd circuit acts on the wheels of the 3rd , 4th axle. Parking brake: air-release brake, acting on 2nd , 3rd and 4th axles, it works through the spring energy storage air chamber on each axle. Auxiliary brake: engine exhaust brake and engine in-cylinder brake.
Steering	Mechanical steering system with hydraulic boost.
Driver's cab	Equipped with four-point connecting structure, the new full driver's cab of steel has open car doors on both sides. The main drivers can adjust height manually. With double seats, the passenger's seats can be used as simple sleeper for temporary rest of drivers. Safe glass with electric lift contributes to good heat-proof effect.. LCD, bus control, centralized information show; and the layout of center console with new combination is safe and reasonable which adopts arc design and represents humanization. Fixed wiring harness connector save the space of driver's cab with fixed plug-in components. It is equipped with standard CD player and air-conditioner both for cooling and heating.
Electric system	24V DC, two sets of battery. Generator: 28±0.3V-70 A



Superstructure

Frame	Designed and manufactured by XCMG; Full-covered walking platform, made of high-strength steel
Hydraulic system	Hydraulic pump: quadruple pump driven by chassisengine, and variable pump is used for hoisting, elevating and telescoping. Control valve Multi-way change valve system is mechanically controlled and main control valve is load sensitive multi-way directional valve. When the differential pressure between pump inlet pressure and load pressure is decreasing or increasing, the system can adjust the flow of motor and oil cylinder, reduce the system temperature and improve the fine inching control of the whole machine. New confluence valves can improve the working efficiency by playing a role in the combined movements of telescoping and elevating, except winch operation. Oil circuit air-cooled hydraulic oil cooler reduces system oil temperature effectively
Operating mode	Stepless speed regulation is available. All the movements of the crane is controlled by hydraulic pump, proportional valve and pilot hydraulic-proportional control system, controlled by two control levers at left and right.
Main/Auxiliary winch system	Hydraulic control is used for speed regulation. The system is driven by a hydraulic motor through a planetary gear reducer, with a normally closed brake, a balanced valve and a bilinear grooved drum equipped. It has features of high speed with a light load and low speed with a heavy load.The Main/auxiliary winch can be operated separately. The auxiliary winch can be operated separately.
Slewing system	Four-point contact ball type with external slewing ring, planetary gear slewing reducer is driven by hydraulic motor which can slew 360° continuously. It has functions of power control or free slewing and stepless speed regulation is available.The slewing lever has ringing switch. Slewing speed.....0 ~ 2r/min
Elevating system	Double-acting front located hydraulic elevating cylinder, counterbalance valve is equipped.
Operator's cab	The new steel cab is located at the left side of turntable, equipped with no dead vision front glass, safe glass, sun visor ,open door and adjustable seat.Wipers are fitted for the windshield and roof window.Standard controls and indicators are equipped with single cold air condition

技术规格

Technical specifications



Boom system

Boom

1-section base boom and 4-section telescopic boom, with anti-twist design and high-strength steel structure. Boom section is U-shaped cross-section, adopts plug-in boom head and slide structure,thereforeboom has large contact area,small deformation, and smooth telescoping .

Main boom length.....11.4m ~ 43.5m

Main boom full extend speed.....fully extend to 43.5m in90s

Jib

A two-stage box-type under slung jib, 1st stage jib length of 9.8m, max. under slung jib length of 16m, three jib offset angles of 5°, 15° and 30°available.

Boom
single top
Boom
auxiliary
pulley

Single top is installed on the top of main boom, for single wire rope hoist.

Its lifting performance is the same as main boom , but its max. lifting load not exceeding 4500kg.



Superstructure

Safety
devices

Hydraulic balance valve、 Hydraulic relief valve、 Double-way hydraulic valve、 LMI、 Control rod with spring-type centering system

Lowering limiter for preventing wire rope from over-releasing、 Height limiter on boom tip for preventing wire rope from over-spooling

Counterwei
ght

Counterweights are installed at the turntable tail , fixed counterweights weight is5500kg, movable counterweights weight is 1000kg.

Additional equipment

Driver's cab

Beacon lamp 、 Reverse image

Safety
device

Anti-lock brake system (ABS)、 Winch View

Cameras 、 Triple-colour Warning Lamp 、 Caution Lamp 、 Angle Indicator

Product parts details As mentioned above, please refer to the product quotation for specific parts.

重量
Weight




车桥 Axle	1	2	3	4	总重量 Total weight
t	8.1	8.1	13	13	42.2








吊钩 Hook	倍率 No. of lines	吊钩重量 Weight kg	吊钩尺寸 Dimensions mm	备注 Remarks
55t	12	517	1325×544×537	单钩 Single hook , 标配 Standard
30t	10	403	1334×544×419	单钩 Single hook , 选装 optional
4.5t	1	71	920×240×240	单钩 Single hook , 标配 Standard

作业速度
Working speeds



		
12.00R24	2 ~ 85	42%



作业机构 Drive	作业速度 Working speed	最大单绳拉力 Max. single line pull	钢丝绳直径/长度 Rope diameter/ length
	0-130 m/min , 单绳 , 第四层 m/min, single line, 4th layer	45 kN	18 mm/190m
	0-130 m/min , 单绳 , 第四层 m/min, single line, 4th layer	45 kN	18mm/125m
	0-2r/min		
	从-1°抬起至81°约40s Approx. 35s for boom elevation from 0° to 80°		
	从11.4m伸出至43.5m约90s Approx. 50s for boom extension from 10.3m to 40m		

臂架组合方案
Boom / Jib combinations

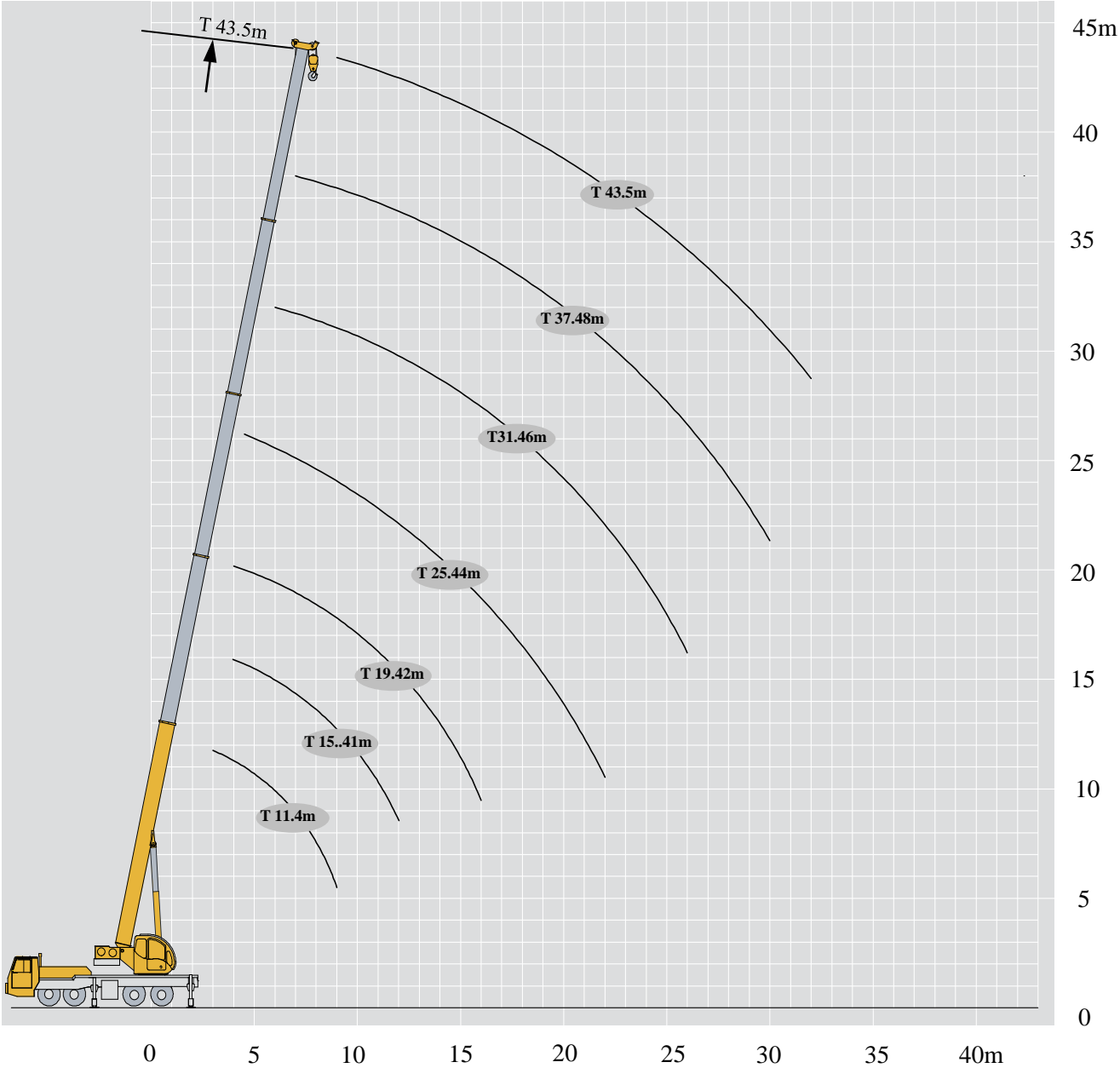




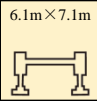
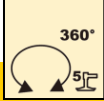
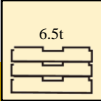

主臂
Telescopic boom

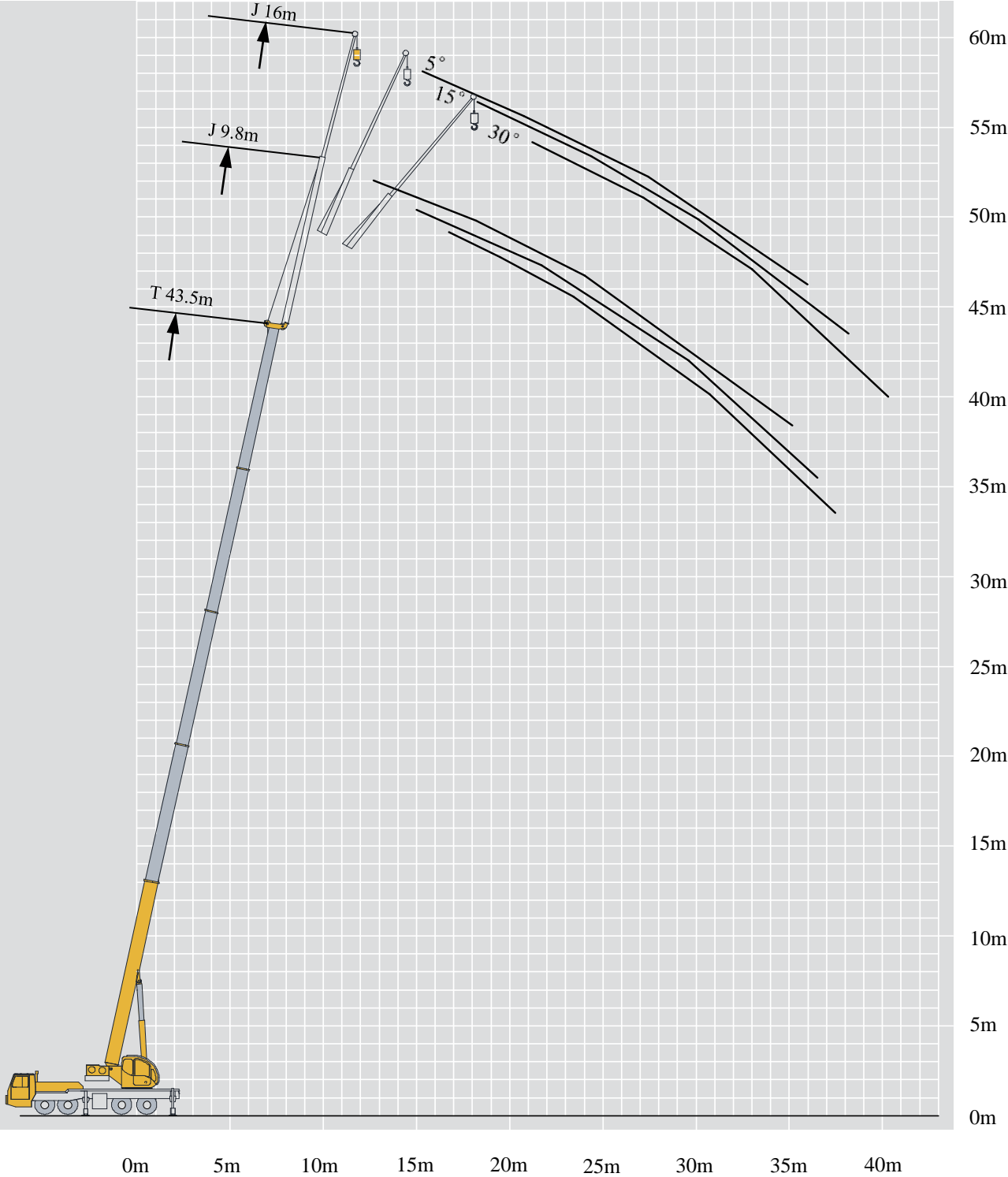
T : 11.4~43.5m

副臂
Jib

T : 43.5m
J : 9.8m/16m




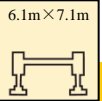
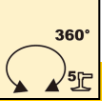
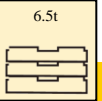




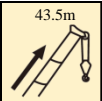
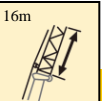
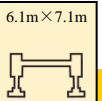

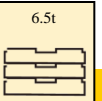

<div><div></div><div></div><div></div><div></div><div></div><div></div></div>								
	11.4m	15.41m	19.42m	25.44 m	31.46 m	37.48m	43.5m	
3	55	45						3
3.5	51	45						3.5
4	48	45	35	25				4
4.5	45	43	33	25				4.5
5	41	40	32	25	18.5			5
5.5	36.5	36	29	25	18.5			5.5
6	33	32.5	27	23.3	18.5			6
7	27	26.6	24.5	21	18.5	14		7
8	22.2	22.6	22.5	19	17.7	13.2	9.5	8
9	17.5	18	17.6	17	16.3	12.5	9.5	9
10		14.6	14.2	15.4	15	11.8	9.3	10
12		10.1	10	10.7	11.3	10.3	8.6	12
14			7.2	7.9	8.4	8.8	7.9	14
16			5.3	6	6.5	6.8	7.1	16
18				4.6	5.1	5.4	5.6	18
20				3.5	4	4.3	4.5	20
22				2.7	3.1	3.6	3.7	22
24					2.5	2.8	3	24
26					1.8	2.2	2.4	26
28						1.7	1.95	28
30						1.3	1.5	30
32							1.2	32



起重性能表
Lifting capacities

T 34m

<div><div></div><div><div>43.5m</div><div></div></div><div><div>9.8m</div><div></div></div><div><div>6.1m×7.1m</div><div></div></div><div><div>360°</div><div></div></div><div><div>6.5t</div><div></div></div><div></div></div>				
	5°	15°	30°	
78	4.5	3	2.5	78
75	4	2.7	2.4	75
72	3.5	2.5	2.3	72
70	3.2	2.3	2.2	70
65	2.55	2.1	1.9	65
60	2	1.7	1.6	60
55	1.2	1	0.9	55
50	0.6	0.5	0.5	50


<div><div></div><div><div>43.5m</div><div></div></div><div><div>16m</div><div></div></div><div><div>6.1m×7.1m</div><div></div></div><div><div>360°</div><div></div></div><div><div>6.5t</div><div></div></div><div></div></div>				
	5°	15°	30°	
78	2.8	1.5	1.2	78
75	2.2	1.3	1.1	75
72	1.9	1.2	1	72
70	1.8	1.2	0.95	70
65	1.6	1	0.85	65
60	1.2	0.9	0.75	60
55	0.85	0.7	0.65	55
50	0.45	0.4	0.35	50

符号标识

Description of symbols

常规标识

General symbols

	上车 Superstructure		底盘 Chassis
	起重能力 lifting capacity		车桥 Axle
	吊臂长度 Boom length		行驶速度 Driving speed
	工作幅度 Radius		爬坡能力 Gradability
	吊臂仰角 Boom position		轮胎 Tyres
	主臂起升高度 Hoist height with Boom		支腿 Outriggers
	固定副臂长度 Fixed jib length		吊钩 Hook block
	副臂安装角 Jib offset angle		平衡重 Counterweight
	副臂起升高度 Hoist height with jib		卷扬 Winch
	使用第五支腿360°全回转 360° rotation with 5th jack		360°全回转 360° rotation

主要技术参数表
Transportation plan

类别 Category	项目 Item		单位 Unit	参数 Parameter
尺寸参数 Dimensions	外形尺寸（长×宽×高） Outline size（lengthch×width×height）		mm	14485×2780×4070
	轴距 Wheel base		mm	1470+4300+1350
	轮距（前/后） Track（Front/ Rear）		mm	2304/2075
	前悬/后悬 Front/ Rear overhang		mm	2376/2064
	前伸/后伸 Front/ Rear extension		mm	2699/226
重量参数 Weight	最大允许总质量		kg	42200
	轴荷	一轴 1st axle	kg	8100
		二轴 2nd axle	kg	8100
		三轴 3rd axle	kg	13000
		四轴 4rd axle	kg	13000
动力参数 Power	发动机型号 Engine model		——	WD615.338
	额定功率/转速 Engine rated power/rpm		kW/(r/min)	276/2200
	最大净功率/转速 Max. net power/rpm		kW/(r/min)	274/2200
	最大输出扭矩/转速 Engine rated torque/rpm		N.m/(r/min)	1500/1100-1600
行驶参数 Travel	最高车速 Max. travel speed		km/h	≥85
	最低稳定车速 Min. travel speed		km/h	2～3
	最小转弯直径 Min. turning diameter		m	≤24
	臂头最小转弯直径 Min. turning diameter at boom tip		m	≤29.2
	最小离地间隙 Min. ground clearance		mm	327
	接近角 Approach angle		°	18
	离去角 Departure angle		°	15
	制动距离（制动初速度为30km/h） Braking distance（at 30 km/h）		m	≤10
	最大爬坡能力 Max. grade ability		%	≥42
	百公里油耗 Fuel consumption per 100 km		L	40
噪音 Noise	加速行驶机外噪声 Exterior noise level		dB(A)	≤88
	驾驶员耳旁噪声 Noise level at seated position		dB(A)	≤90

主要技术参数表
Transportation plan

类别 Category	项目 Item			单位 Unit	参数 Parameter
主要性能参数 Main performance	最大额定总起重量 Max. total rated lifting capacity			t	55
	最小额定工作幅度 Min. rated working radius			m	3
	转台尾部回转半径 Turning radius at turntable tail	平衡重处 Counterweight		mm	3800
		副卷处 Auxiliary winch		mm	—
	最大起重力矩 Max. load moment	基本臂 Base boom		kN.m	2009
		最长主臂 Fully-extended boom		kN.m	1129
		最长主臂+副臂 Fully-extended boom + Jib		kN.m	621
	支腿跨距 Outrigger span	纵向 Longitudinal		m	6.1
		横向 Lateral		m	7.1
	起升高度 Hoist height	基本臂 Base boom		m	11.9
		最长主臂 Fully-extended boom		m	44
		最长主臂+副臂 Fully-extended boom + Jib		m	58.1
	起重臂长度 Boom length	基本臂 Base boom		m	11.4
		最长主臂 Fully-extended boom		m	43.5
		最长主臂+副臂 Fully-extended boom + Jib		m	59.5
	副臂安装角 Jib offset angle			°	5、15、30
工作速度参数 Working speed	起重臂起臂时间 Boom raising time			s	≤40
	起重臂全伸时间 Boom fully extended time			s	≤90
	最大回转速度 Max. slewing speed			r/min	≥2
	支腿收放时间Outrigger extending and retracting time	水平支腿 Outrigger beam	收 Retracting	s	≤30
			放 Extending	s	≤35
		垂直支腿 Outrigger jack	收 Retracting	s	≤35
			放 Extending	s	≤40
	起升速度（单绳,第四层， 空载） Hoisting speed (single line, 4th layer, no load)	主起升机构 Main winch		m/min	≥130
		副起升机构 Auxiliary winch		m/min	≥130
噪声 Noise	机外辐射 Exterior noise level			dB (A)	≤122
	司机位置处 Noise level at seated position			dB (A)	≤90

1. 表中额定总起重量值，是在平整的坚固地面上本起重机能够保证的最大总起重量，包括吊钩和吊具的重量，所以为了估算重物重量，必须减去上述的装置重量。
2. 表中的工作幅度为起吊重物离地时起重物到起重机回转轴线的水平距离，是包括起重臂变形量在内的实际值，因而起吊前应考虑起重臂变形量。
3. 只允许在5级(瞬时风速14.1m/s，风压125N/m²)风以下进行作业。
4. 吊重前操作者必须对物体的重量和工作范围了解后选择合适的作业工况，严禁超出表中的数值。幅度及臂长在相邻两个数值之间时，应依据两个数值中较小值确定起重作业。
5. 应按主臂仰角范围作业，即使是空载，也不应使主臂仰角处于范围外，谨防整机倾翻。
6. 表中的主臂长度应要按照每节臂的伸缩要求进行伸出。

1. The total rated loads given in the rated load charts are the maximum lifting capacity when the crane is set up on firm and level ground, which includes the weight of the hook block and slings. The weight of above-mentioned devices should be deducted to correctly calculate the load weight.
2. The working radius shown in the rated load charts is the radius when the load is lifted off the ground, and it is the actual value including loaded boom deflection.
3. A lifting operation is permissible only when the wind force is below grade 5 (instantaneous wind speed is 14.1 m/s, wind pressure is 125 N/m²).
4. Before beginning lifting operation, the operator should know the weight of the load to be lifted and its working range, and then select proper working conditions. Never operate the crane beyond the limit shown in the chart. Use the lower value from the chart when the boom length or working radius is between the range of values.
5. Observe the boom angle limit. Never operate the crane with the boom angle beyond the recommended limit even if a load is not being carried. Otherwise, the crane will tip.
6. The boom length given in the rated load charts should accord with the telescoping code of boom sections .



地址：江苏省徐州市经济技术开发区高新路68号

Add : No. 68, Gaoxin Road, Economic Development
Zone, Xuzhou, Jiangsu Province, China

电话(Tel)：+86-516-83462242/83462350

质量监督电话(Quality Inquiry Tel)：+86-516-87888268

备件电话(Spare Parts Tel)：+86-516-83461542

邮编(Post Code)：221004

网址(Web)：www.xcmg.com/qizhongji

服务热线 Service Tel

400-110-9999

400-001-5678



本印刷品不属于合同。出于产品不断改进的需要，我们保留对产品型号、参数、配置进行变更的权利，恕不另行通知。图片仅供参考，具体产品以实物为准。图片中产品可能并非标准配置，部分部件可能需要另行购置。办理牌照和上路行驶需遵守当地法规。

This print does not belong to the contract. We reserve the right to modify the design (such as product model, parameters and configuration) without notice for improvement. The pictures are just for reference. The product in the picture may not be standard configuration. Some parts need to be purchased separately. Conform to the local laws for license application and road traveling.

XCMG—QY55KA_Y（腹置副臂）